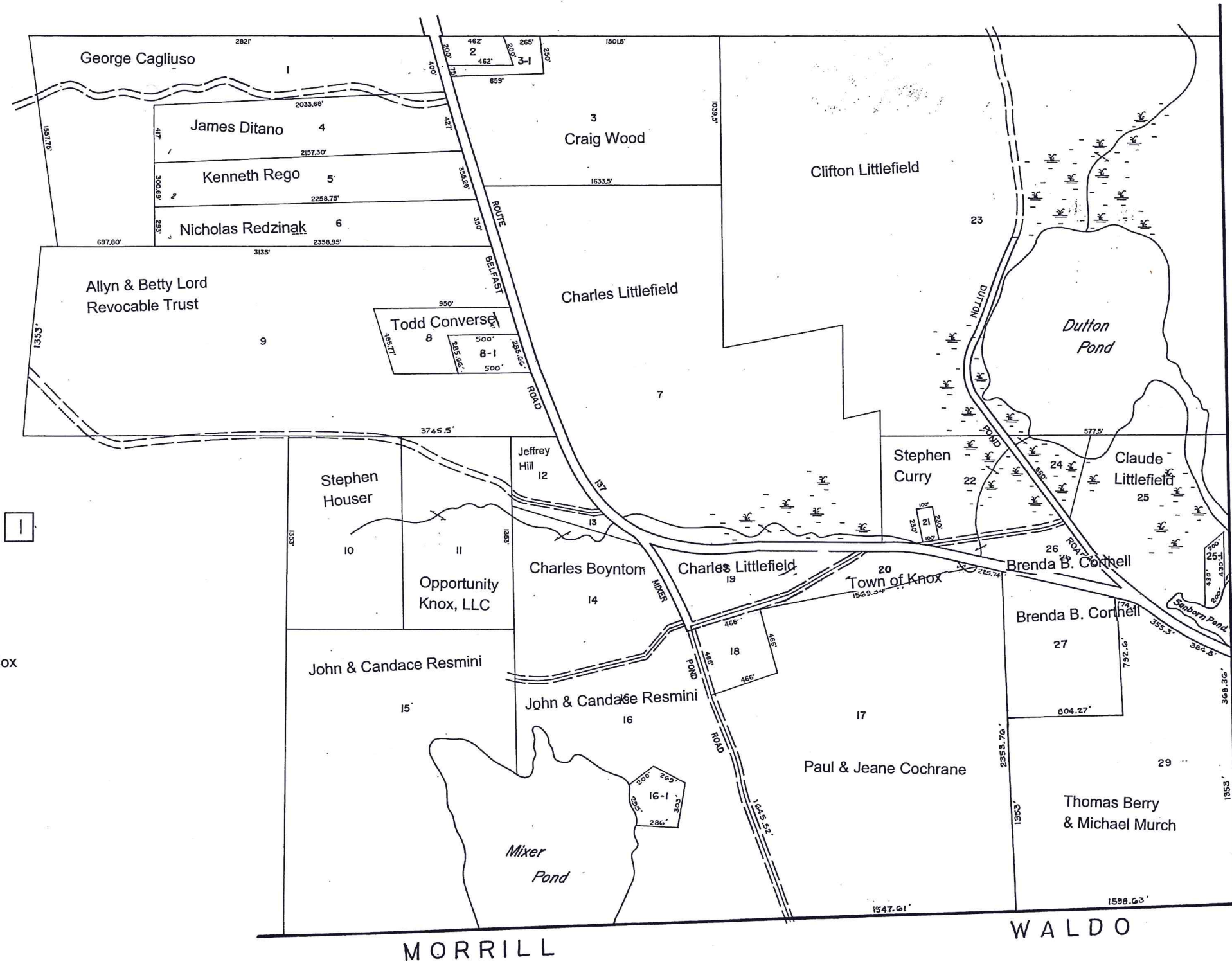




4



BROOKS

MORRILL

WALDO

- 2-2 Dana Llewellyn
- 2-3-1 Dana Llewellyn
- 2-8-1 Justin Palmer & Elizabeth Cox
- 2-13 Frye Mountain Game Preserve
- 2-16-1 John & Chalsey Resmini
- 2-18 Virginia Walker
- 2-21 Stephen Curry
- 2-24 Claude Littlefield
- 2-25-1 Kelly Tharp
- 2-28 Bessey Development



TAX MAPS ARE NOT SURVEYS. THEY ARE COMPILED FROM AERIAL PHOTOGRAPHY, EXISTING SURVEYS, DEEDS, AND LAND OWNERS DESCRIPTIONS. THEY ARE TO BE USED ONLY FOR ASSESSMENT PURPOSES, AND NOT FOR CONVEYANCES.

DATE OF AERIAL PHOTOGRAPHY APRIL 19, 1991
 DATE OF MAP COMPLETION APRIL 1, 1992
 MAP SCALE 1 INCH = 400 FEET

LEGEND
 PARCEL NUMBERS 2
 MATCH LINE
 ADJACENT MAPS 3

APR 01 2018

TAX MAP
 TOWN OF KNOX
 WALDO COUNTY, MAINE

MAP NUMBER
 2